



Figure 12. Lateral spreading of 1.5 m under a pile-supported wood-frame house at La Playa.

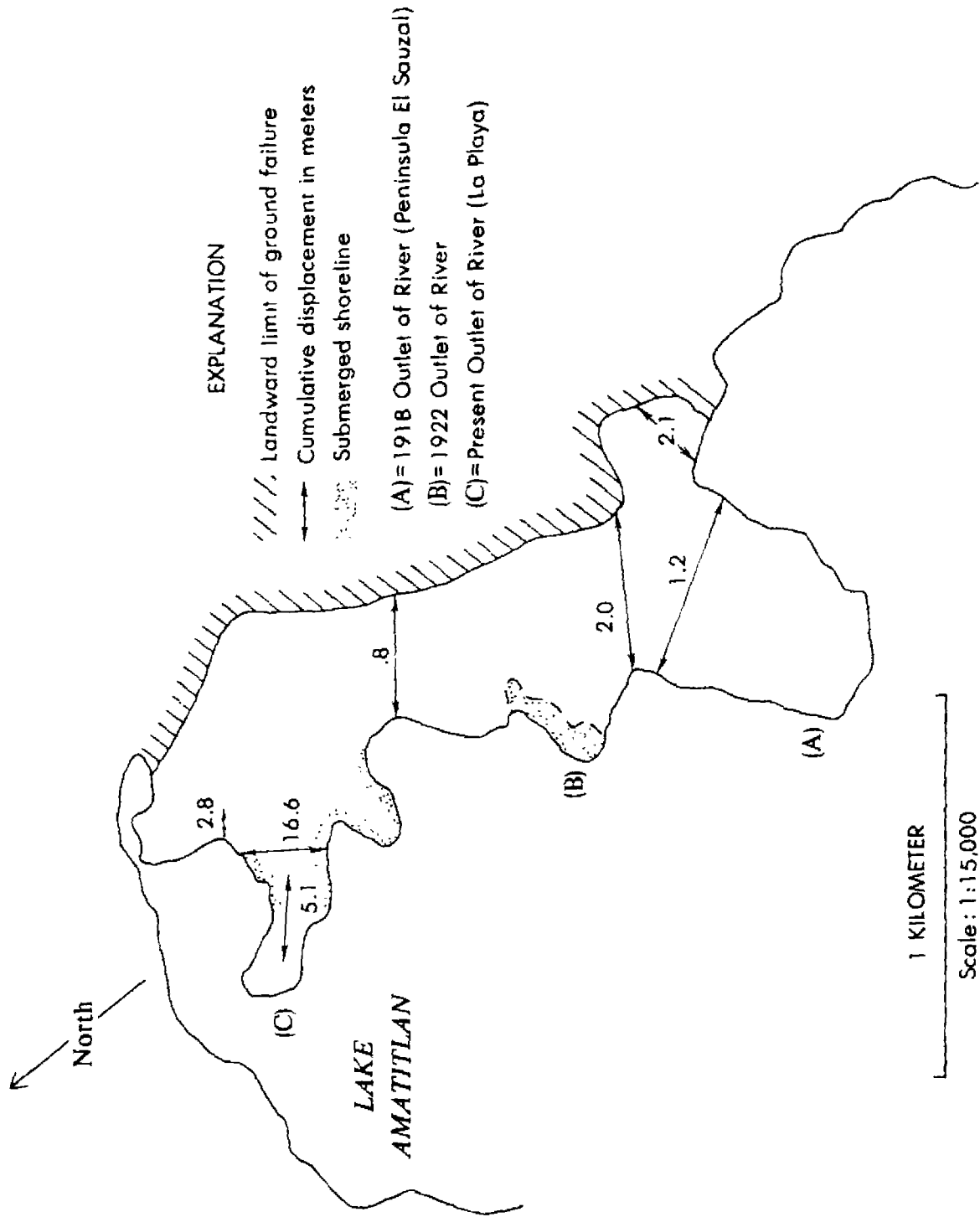


Figure 13. Diagrammatic representation of the cumulative lateral spreading calculated from widths and horizontal offsets measured across open ground cracks on the Villalobos delta at Lake Amatitlan.

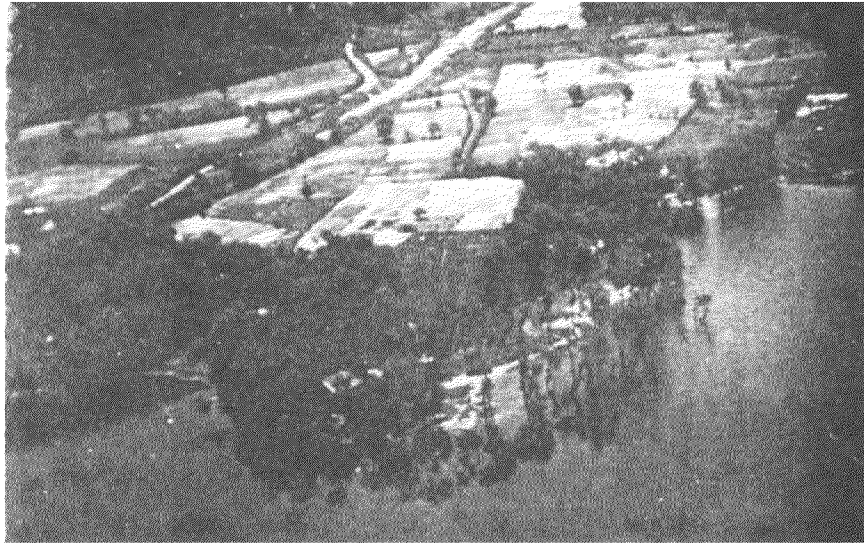


Figure 14. Photograph of the southern lobe of the Villalobos delta at La Playa, taken from a light airplane on 22 April, 1976. Extensive subsidence is indicated by the trees standing in the water. Patches of sand in the fields in the background are from sand boils.

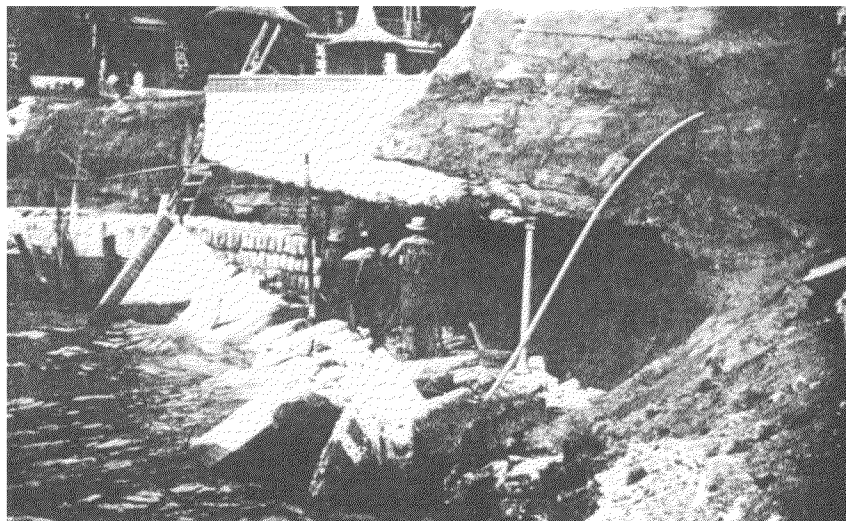


Figure 15. Hotel Tzanjuyu (Lake Atitlan) swimming pool damaged by a subaqueous landslide. A retaining wall is under construction to protect the area from erosion by lake waves.