



Photo 1 - Foundations (too small for lightweight building) pulled completely out of the ground (David)

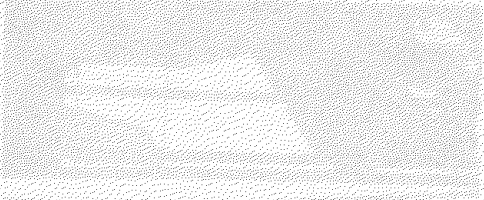


Photo 2 - Dramatic and total destruction of large, steel, portal-frame building (David)

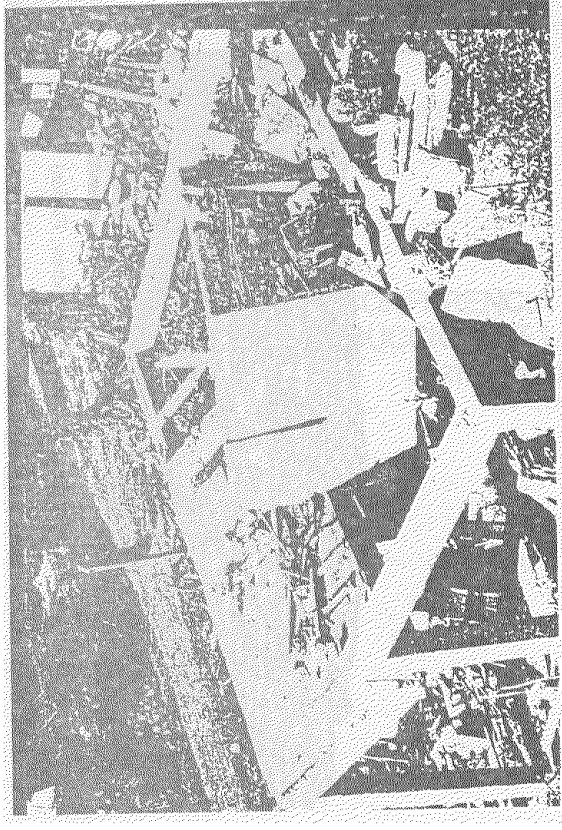
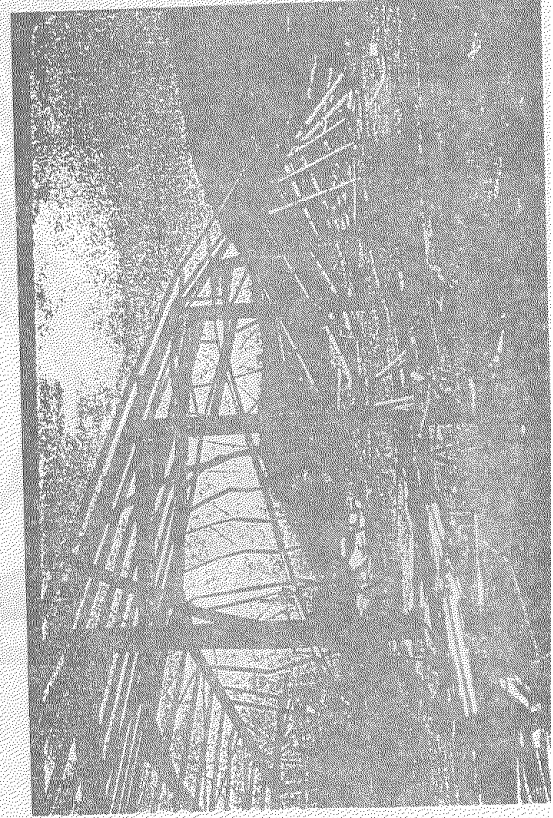


Photo 3 - Total loss of unreinforced concrete blockwalls and destruction of reinforced-concrete supports (David)



Photo 4 - Destruction of expensive former-farm residence (Andrew, Cal. CA) (Annamax)